



LIPP DORMEUSE

design Piero Lissoni

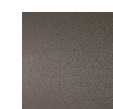
Dormeuse with armrest and backrest frame in multilayer poplar wood and padding, with "capitonné" working, in differentiated density polyurethane foam with acrylic fibre layers.

Seat chassis in 50x30mm tubular steel with black epoxy powder coating, sprung with coated rubber elastic straps and padded in polyurethane foam covered in 100% polyether thermally bonded onto a polyamide velveteen backing.

Seat cushions in differentiated density polyurethane foam and Visco-soft covered with acrylic fibre layers.

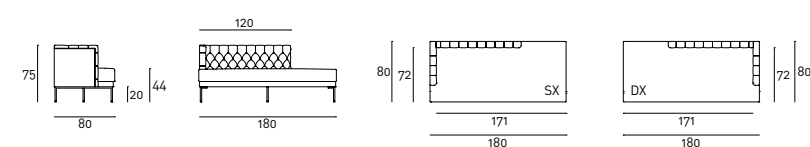
Tubular steel feet, joined by a bracket in square section 15x15mm, with epoxy powder coating burnished color with adjustable black PVC tips. Armrest and backrest upholstery, with capitonné working, non-removable in both leather or fabric version; seat cushion and under-seat chassis upholstery in fabric or leather, both fully removable by zippers.

Bracket



Burnished
Painted Steel

Technical Drawings



Loose Cushion



Notes

The detail Capitonné cannot be done with leather Cuoietto.